



ADDENDUM 1

FROM: KENYA INSTITUTE OF SUPPLIES EXAMINATION BOARD

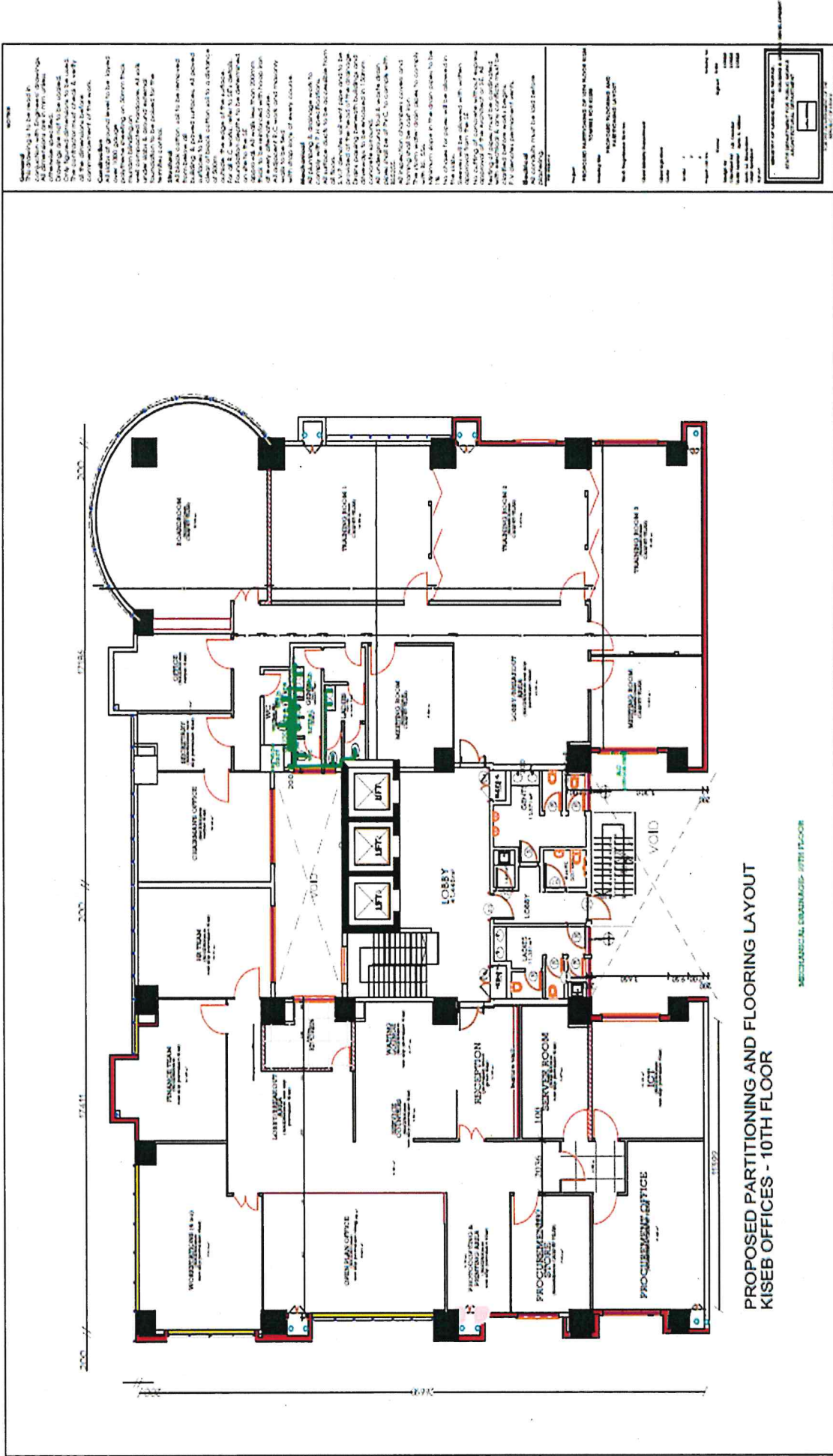
TENDER NAME: PROPOSED OFFICE PARTITIONING FOR KENYA INSTITUTE OF SUPPLIES EXAMINATION BOARD (KISEB) AT KISM TOWERS, NGONG ROAD – PHASE 1

PROJECT NO: W.P ITEM NO. D1066/NB/NB/2202 - JOB NO. 11155A

DATE ISSUED: 8TH JUNE 2023

S/N	CLARIFICATION SOUGHT	RESPONSE
1.	<p>We would like to request clarification on the item below regarding the Access Control System.</p> <p>PART A: PARTICULAR SPECIFICATIONS FOR ACCESS CONTROL SYSTEM INSTALLATION</p> <p>We would like to know the number of users to be provisioned for the Access Control System.</p>	<p>The door to be access controlled is the Main entrance to that wing. The number of cards provided is 10No. but the door reader which is fingerprint controlled can register as many as the Client requires</p>

2. We would like to request that you share the floor plan to help us estimate on the distances.



3. We would like to request clarification on the item belows.

17	i) Wireless gateway module complete with accessories & line ii) Wireless module complete with accessories & line	1No.
18	Digital ISDN PRI-EI line card (bidder to indicate the No. Of channels.....)	1No.
19	ISDN (PRI) card complete with a local modem	1No.

17.

Technical Specifications	
Mechanical	Ubiquiti UniFi Access Point WiFi 6 Pro (U6-PRO)
Quantity	3
Dimensions	Ø160 x 33 mm (Ø6.3 x 1.3")
Weight	Without mount: 338 g (0.75 lb)
	With mount: 413 g (0.91 lb)
Enclosure materials	Polycarbonate, aluminum
Mount materials	ABS, SGCC steel
Hardware	
Networking interface	(1) GbE RJ45 port
Management interface	Ethernet
Power method	PoE
Supported voltage range	44-57V DC
Max. power consumption	9W
Max. TX power	
2.4 GHz	23 dBm
5 GHz	23 dBm
MIMO	
2.4 GHz	2 x 2
5 GHz	2 x 2
Throughput rate	
2.4 GHz	573.5 Mbps

5 GHz	2402 Mbps
Antenna gain	
2.4 GHz	3dBi
5 GHz	5.4 dBi
Button	Factory reset
LEDs	White/blue
Operating temperature	-30 to 60° C (-22 to 140° F)
Operating humidity	5 to 95% noncondensing
Certifications	CE, FCC, IC
Software	
WiFi standards	802.11a/b/g WiFi 4/WiFi 5/WiFi 6
Wireless security	WPA-PSK, WPA-Enterprise (WPA/WPA2/WPA3)
BSSID	8 per radio
VLAN	802.1Q
Advanced QoS	Per-user rate limiting
Guest traffic isolation	Supported
Zero wait DFS	Not supported
Concurrent clients	300+
Software	
Management application	UniFi Network: Version 7.3.76 and later

18 & 19

Specifications	
Name	Yeaster Neogate TG200
Quantity 1	2 Port GSM VOIP Gateway
Network	850/900/1800/1900MHz

	Intelligent call routing Protocol: SIP (RFC3261), IAX2 LAN: 1 (10/100 Mbps) Codec: G.711 a/u-law, G.722, G.726, G.729a, GSM, ADPCM, Speex Transport Protocol: UDP, TCP, TLS, SRTP GSM/3G/4G to VoIP and VoIP to GSM/3G/4G SIM Card 2G/3G/4G SIM Card (Backward Compatible)
<p style="text-align: center;">Voice Call</p>	Call Waiting Support Call Echo Cancellation: ITU-T G.168 LEC Support external antenna Forwarding Simple web based configurations High compatibility with major IP PBX Setup Installation, Configuration commissioning and user testing

Sorry for any convenience caused


 Secretary & Chief Executive Officer

KENYA INSTITUTE OF SUPPLIES EXAMINATION BOARD.